



**SOUTH WEST
BUSINESS PARK**
Cheeverstown, Citywest, Dublin 24

A development by
ROHAN 



UNIT 1



FOR SALE | TO LET

High-Bay Warehouse
with Offices

Approx. 5,586 sq m
(60,127 sq ft)

Site of Approx. 1.37
Hectares (3.40 acres)

- N High Profile Unit With Generous Dedicated Yard Area
- N Access Controlled And Secure Business Park Environment
- N Established Business Location Immediately Adjoining the LUAS Cheeverstown Stop
- N Only Minutes From M7 and M50
- N Generous yard depth of approx. 38m average



SOUTH WEST BUSINESS PARK

Cheeverstown, Citywest, Dublin 24

UNIT 1

LOCATION

RAPID access to the M7 and the M50 Motorways.

EXCELLENT access for staff via public transport infrastructure such as the LUAS, Dublin Bus and proximity to arterial routes to and from Dublin city.

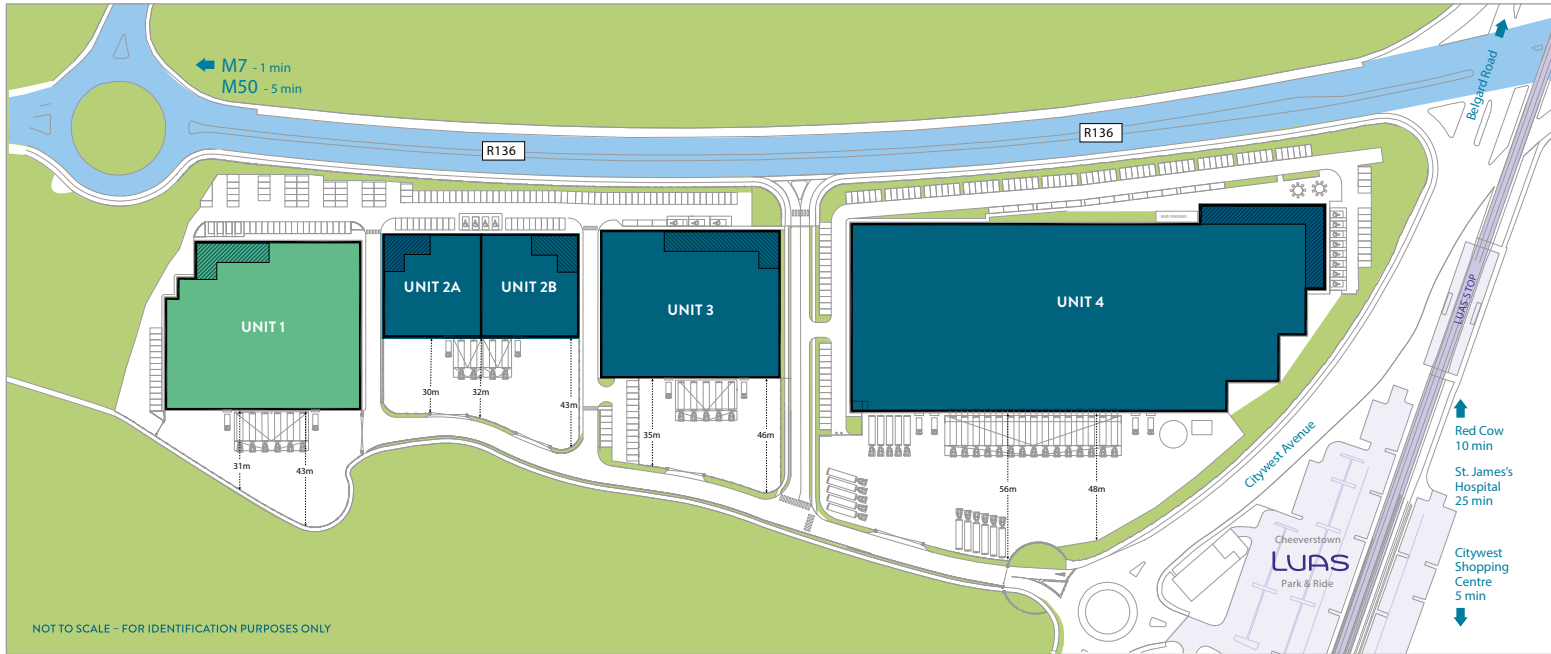
IMMEDIATE access to the nearby workforce and generous local amenities, such as shopping centres, hotels, leisure facilities, hospitals, post office, etc.

ESTABLISHED business location for quality warehouse/office operations adjacent to Citywest Business Campus and Magna Business Park.

SOUTH WEST BUSINESS PARK

- N Dublin's only new build logistics park with adjoining Luas Stop.
- N Best in class warehouse units with air conditioned offices and LEED Silver sustainability credentials.
- N Each unit offers dedicated car parking and secure yards.



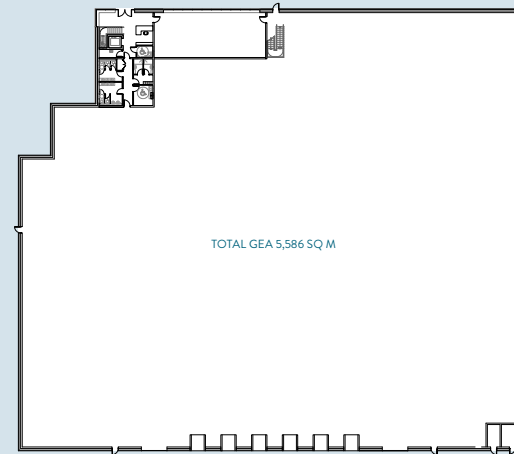


FLOOR PLANS

1st Floor



Ground Floor



SPECIFICATIONS/FEATURES

GENERAL

- N LEED Silver targeted and LEED Gold for tenant fit out facilitated.
- N 12 metre clear internal height.
- N Steel portal frame construction.
- N Extensive secure service yard and car parking.
- N 6 dock levellers with tailgate loading.
- N 2 roller shutter doors.
- N Min. 60 kn./m2. (1,250 lbs./sq.ft.) floor loading.
- N 2.4 metre high wall to inside of external cladding wall.
- N LED lighting.
- N Electric vehicle (EV) charging.
- N Electrical distribution centre designed for three phase electrical supply and CT metering.
- N High quality actively managed estate.

OFFICES

- N Feature reception area.
- N Open plan design suitable for compartmentation.
- N Shower facilities.
- N VRF air conditioning.
- N Suspended acoustic tiled ceilings with recessed LED lighting.
- N Painted and plastered walls.
- N Fully fitted toilets and tea station facilities.
- N Perimeter skirting trunking.
- N Fully bonded heavy contact carpet.

ACCOMMODATION

APPROXIMATE GROSS EXTERNAL FLOOR AREAS

Unit 1	Sq M	Sq Ft
Warehouse	5,040	54,250
Offices	546	5,877
Total	5,586	60,127

Site area of approx. 1.37 Hectares (3.40 acres)



SOUTH WEST BUSINESS PARK



OUR CLIENTS INCLUDE:



Harvey Norman

HOLLAND & BARRETT



www.rohanholdings.ie



This project is registered with the certification goal of LEED Silver®. LEED (Leadership in Energy and Environmental Design) is a voluntary rating system to certify sustainable buildings and neighbourhoods.



Rohan Holdings is a proud member of the Irish Green Building Council. The IGBC is a non-profit organisation, launched in 2011 with member organisations and businesses from the entire value chain of the built environment. All are united in one common goal to accelerate the transformation of the built environment, related industry and supply chain to one that is sustainable through leadership, research, education and providing policy input to local and national government.

For more information, visit www.igbc.ie



TERMS

Available upon request.

TARGETED BER



RATES

Commercial Rates payable to Fingal County Council.

OTHER

OUTGOINGS
Available upon request.

CONTACT



164 Shelbourne Road,
Ballsbridge,
Dublin 4, Ireland
www.cushmanwakefield.ie

4th Floor, Block 2,
Harcourt Centre,
Harcourt Street,
Dublin 2, Ireland.

BRENDAN SMYTH

T 01 639 9383
E brendan.smyth@cushwake.com

JOHN CASEY

T 01 6624455
M 086 7967072
E jcasey@rohanholdings.ie

MARC KELLY

T 01 639 9258
E marc.kelly@cushwake.com

JAMIE ROHAN

T 01 6624455
E jrohan@rohanholdings.ie

PSRA Licence No.: Cushman & Wakefield 002222 | Rohan PSRA Licence No.003550

Cushman & Wakefield (NYSE: CWK) is a leading global commercial real estate services firm for property owners and occupiers with approximately 52,000 employees in approximately 400 offices and 60 countries. In 2022, the firm reported revenue of \$10.1 billion across its core services of property, facilities and project management, leasing, capital markets, and valuation and other services. It also receives numerous industry and business accolades for its award-winning culture and commitment to Diversity, Equity and Inclusion (DEI), Environmental, Social and Governance (ESG) and more. For additional information, visit www.cushmanwakefield.com.